

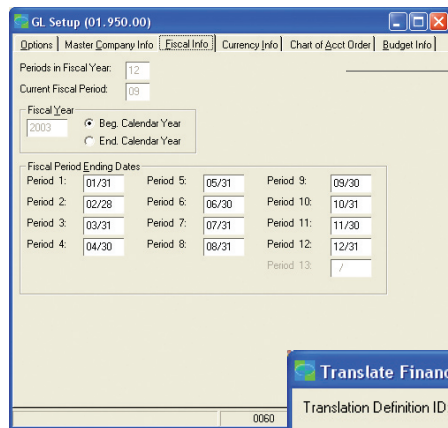
Financial Management - Solomon



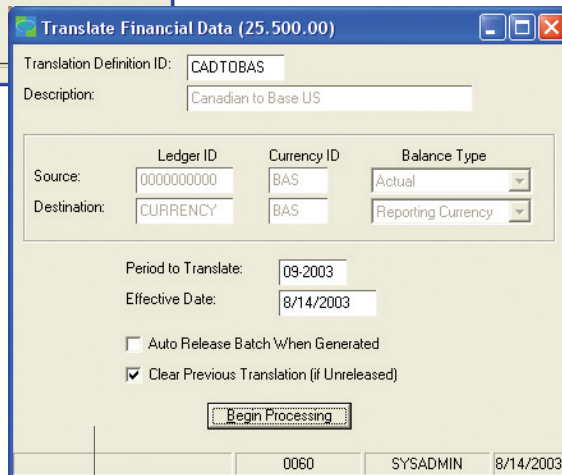
Capture and analyze the financial information you need to make better business decisions with flexible, integrated capabilities that let you harness your accounting processes to meet the way you do business.

B E N E F I T S

GENERAL LEDGER



Configure
the appropriate number of periods and customize your fiscal year.



Drill down
instantly from a balance to the supporting source documents for detailed account information.

Tailor to fit your needs

Set up accounts and sub-accounts to meet your operating needs and represent your divisional structure for accounting and reporting purposes with easily configurable and user-definable options that help you better manage your time and business.

Save time with efficient data entry

Accelerate data entry with transaction batch options and user-definable default values that automatically populate data fields. Help reduce erroneous postings by defining valid account and sub-account combinations.

Improve your decision making

Get the information you need with powerful inquiry and lookup capabilities that facilitate rapid access to information you need to make better business decisions.

Improve processing time

Streamline monthly and year-end closing processes by automating routine activities, allocations, and reports. You can have multiple sessions open simultaneously, and even execute multiple tasks while others are processing.

Gain flexible control of your financial data

Achieve the flexibility to manage your financial information to fit the way you do business with multiple posting options and capabilities that let you enter transactions for any prior or future fiscal period and help you manage installments and prepayments at the same time.

Consolidate financial reporting

Draw on integrated financial reporting to communicate financial results through a built-in version of Microsoft® Business Solutions for Analytics-FR^x.

AVAILABLE WITH: SOLOMON
 SOLOMON STANDARD

GENERAL LEDGER | FEATURES AND FUNCTIONALITY

Timely Business Information	Keep accurate records of all your financial data for easy access to timely business information, with the assurance that a complete audit trail underlies your business transactions.
Multiple Ledgers	Multiple book sets can be maintained in a single database, allowing for budgets, forecasts, and statistical information to be compared in context with your actual operating results.
Import/Export	Import or export information from other ledgers, companies, currencies, and databases to consolidate financial information, giving you a complete picture of your organization – whether a single office or a multi-national business.
Reliable Controls	Set reference numbering to automatic, manual, or optional at the time of data entry. Control closing easily by choosing whether to close or keep subsidiary applications open for activity until the General Ledger application is closed. The application creates a complete audit trail without the need for additional reports or controls outside the system.
Microsoft FRx Support	<ul style="list-style-type: none"> • Summarize balances and drill down to general ledger detail with Microsoft FRx. • Use predefined financial statements, modify standard statement formats, or create your own using Microsoft FRx Report Designer. • Export formulas into Microsoft Office Excel and IBM's Lotus 1-2-3 and create passwords to help protect rows, columns, and trees from unwanted changes.
User-Defined Account Structure	<ul style="list-style-type: none"> • Set up your account/sub-account structure for optimal reporting. Define up to 30 characters in meaningful segments for your general ledger account/sub-account ID structure. Main account numbers can be up to 10 characters long, and sub-accounts up to 20, including as many as eight segments. • Define and maintain account/sub-account combinations easily.
Multi-Company Support	Report on all companies within your organization. Create inter-company transactions, maintain centralized cash control, and make multi-company allocations.
Multi-Entity Consolidation	Consolidate information from different databases with similar and differing periods, calendar years, and chart of account structures.
Centralized Data Storage	Maintain information for multiple book sets in a single, consolidated Microsoft SQL Server™ database by setting up multiple ledgers of statistical information, budgets, financial books, tax books, or a translated set of financials.