

# InterCompany for Microsoft Business Solutions - Solomon



**DataGroup  
Solutions**  
COMPUTER SOFTWARE & SERVICES

The Solomon New Zealand InterCompany module facilitates the automatic generation of InterCompany transactions from source transactions entered into Solomon financial modules.

## Modules currently supported

- Accounts Payable
- Accounts Receivable
- General Ledger

## Supported functionality

- AP vouchers/debit adjustments/credit adjustments
- AP recurring vouchers
- AR invoices/credit memos/debit memos/cash sales
- AR recurring invoices
- GL journals
- Multi-currency**
- Multi-database**

## Background

The InterCompany module introduces to Solomon the concept of an InterCompany ID. Transactions entered into Solomon that require InterCompany journals are marked with an InterCompany ID. Defined for each InterCompany ID are a set of General Ledger account and subaccount codes, which are used to produce the required General Ledger InterCompany journals.

The InterCompany module has been written using Solomon's award winning Visual Basic Toolkit giving the look and feel of a standard Solomon screen.

All of a period's InterCompany transactions from one database can be processed at one time regardless of module, currency, or destination database. Alternatively, individual batch processing is available.

Re-runs of previously processed batches are available on demand.

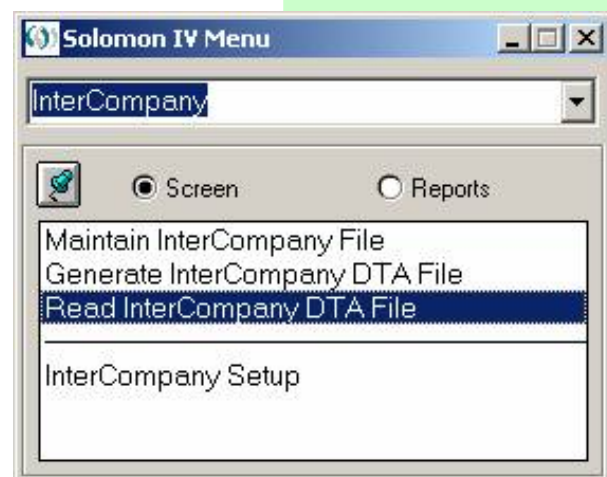
One InterCompany file can contain InterCompany transactions for multiple databases with multiple base currencies. This file can then be distributed and 'read in' as required minimising the number of files to manage.

Transactions are passed across in the original currency entered. This extends the audit trail from the originating database to the receiving database. In addition, document or invoice dates can be selected to 'follow' the transactions as the General Ledger transaction date.

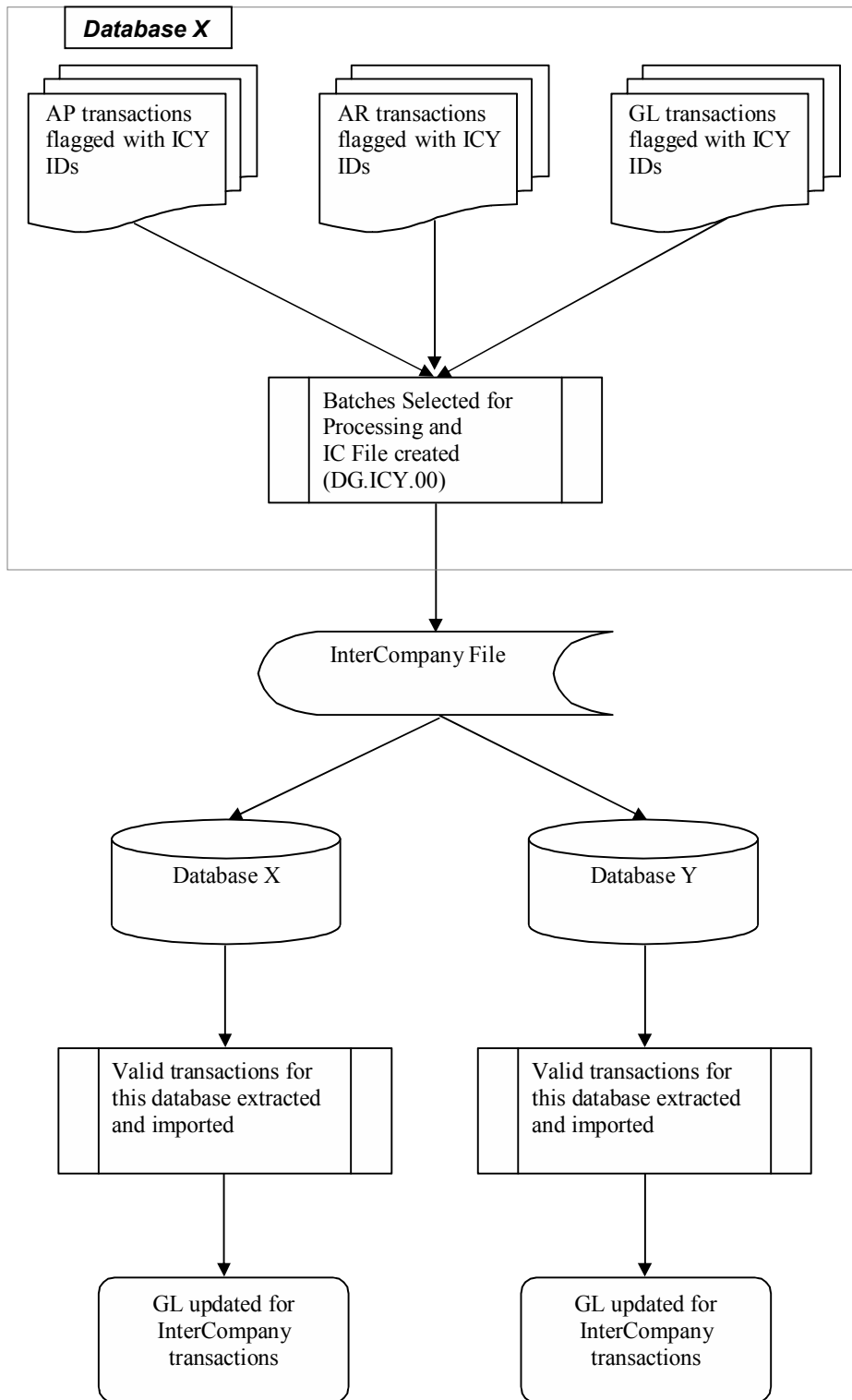
Solomon's Transaction Import function is employed to create the InterCompany General Ledger Journals enforcing validation of your accounting data.

Solomon's Transaction Import function is employed to create the InterCompany General Ledger Journals enforcing validation of your accounting data.

Below is the InterCompany Menu used to accomplish the fore mentioned tasks:



## 1.0 Process Flow Chart



Developed by:



**DataGroup  
Solutions**

COMPUTER SOFTWARE & SERVICES

DataGroup Solutions  
PO Box 2902  
Auckland  
New Zealand

Ph: +64 9 980 4550  
Fax: +64 9 630 6619

**Sales Information Email:**  
sales@datagroup.co.nz

**For product pricing and availability,  
contact your authorised Solomon  
reseller.**