

# Direct Debits for Microsoft Business Solutions - Solomon



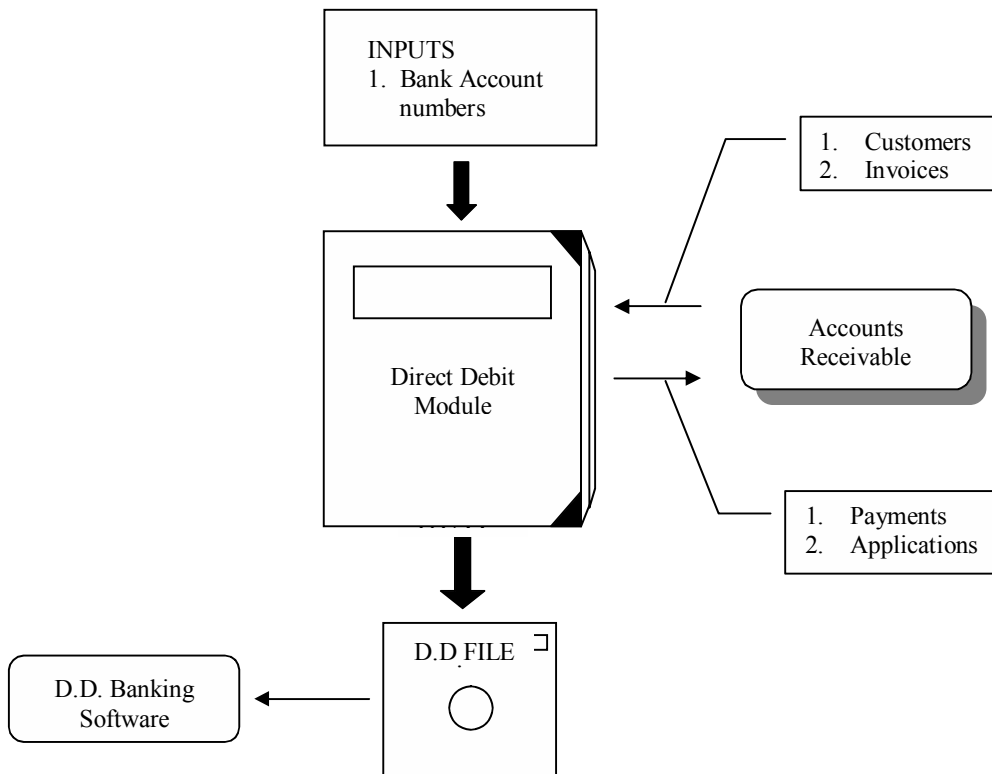
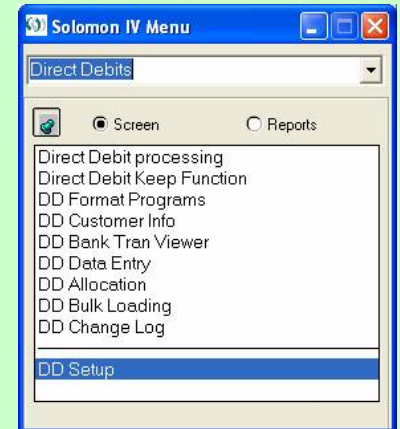
**DataGroup Solutions**  
COMPUTER SOFTWARE & SERVICES

The Direct Debit module is used to generate customer payments via direct debit. It is envisaged that the module will be used in at least two ways. One way is for direct debit payment of specific invoices. The other way is for customers to pay their entire outstanding balance by direct debit.

## The Direct Debit process works through the following steps:

- Invoices are entered into Solomon and released as per normal processing.
- A 'batch' of Accounts Receivable documents is compiled in a similar fashion as the Payment Selection and Payment Exception processes used in Accounts Payable.
- A Direct Debit run is commenced which:
  - Calls the program that formats the banking transactions for the bank involved and creates an output file for the banking software to read.
  - Calls a 'Keep' function that launches a transaction import for the direct debit payments into the payment application screen.
  - Releases a batch of direct debit payments.
  - Runs an allocation function that allocates the direct debit payments to the invoices that were paid.

A customisation to the Customer Maintenance screen in Solomon's Accounts Receivable module allows bank accounts and other banking details to be entered for each customer. All other interaction takes place within the Direct Debit module.



Developed by:



**DataGroup Solutions**  
COMPUTER SOFTWARE & SERVICES

DataGroup Solutions  
PO Box 2902  
Auckland  
New Zealand

Ph: +64 9 980 4550  
Fax: +64 9 630 6619

**Sales Information Email:**  
sales@datagroup.co.nz

**For product pricing and availability,  
contact your authorised Solomon  
reseller.**