

Direct Credits - (EFT) Module for Microsoft Business Solutions - Solomon

The Direct Credit module performs the function of electronic payment of vendors as an alternative to computer generated cheques or manual payment. The Direct Credit module works in conjunction with your banking software by producing an input file in the required bank format. The fact that the Direct Credit module is fully integrated with standard Solomon modules ensures the electronic payment then updates required financial records.

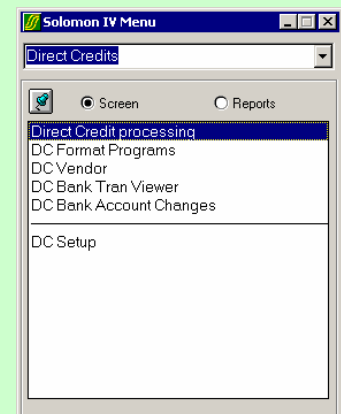
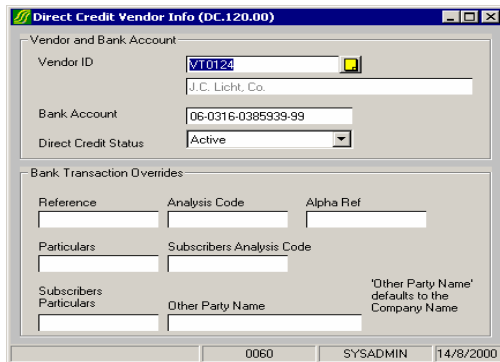
The Direct Credit module allows for normal Solomon Accounts Payable selection flexibility and to work with an interface program to suit your banking software.

Integration with other modules

The Direct Credit module has been developed as a fully integrated Solomon application using the Solomon award winning development tools, VB Tools. This means you can use all the Solomon Customisation flexibility and Crystal Reports for all output. Direct Credit is integrated with the standard Solomon modules of:

- Accounts Payable
- General Ledger
- Cash Manager

The Direct Credit module employs the full Accounts Payable payment selection process to build up its selection including due date, pay date or selected by Vendor. This result is then passed through an interface program specific to the banking software being utilised to produce an input file to be read into the banking software.



Multiple Bank Accounts

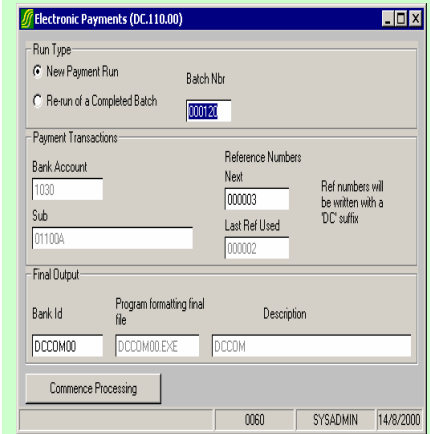
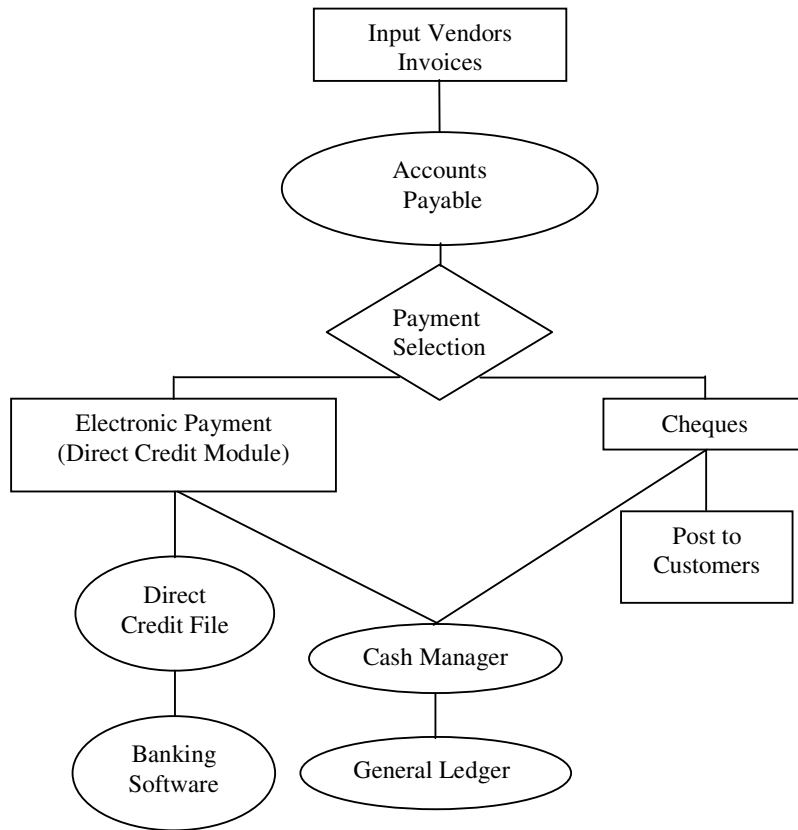
The Direct Credit module allows you to make payment runs from different bank accounts. These bank accounts may involve different banks with completely different bank interfaces.

Audit Control & Security

As a security measure in the 4.x version of the Direct Credit module, we have implemented "change logging" to record whenever a vendor bank account is charged. This feature was requested by auditors to make sure they could report on and trace user payment account errors or possible fraud.

All of the standard Solomon security features have been implemented as part of the Direct Credit module. These features include user/group restrictions to screens and processes and the ability to make some fields display only or invisible.

Direct Credit Module – Business Process



Developed by:



Bank Interfaces

As most banks have developed their own Electronic Banking Products, or groups of banks within a country, the Direct Credit module has been designed to be flexible in allowing for an infinite number of Bank Interfaces.

The Direct Credit module is designed to complete all of the Solomon accounting payment processing and produce a series of output files ready for the Bank Interface. The Bank Interface will manipulate these output files to produce the appropriate format for your bank. This Bank Interface program may need to be created using VB Tools or Visual Basic by your local Solomon Reseller or can be produced by a Solomon developer such as Data Group.

Any given client using the Direct Credit module can also have multiple Bank Interfaces available.

DataGroup Solutions
PO Box 2902
Auckland
New Zealand

Ph: +64 9 980 4550
Fax: +64 9 630 6619

Sales Information Email:
sales@datagroup.co.nz

**For product pricing and availability,
contact your authorised Solomon
reseller.**